

PHILCO RADIO-PHONOGRAPH

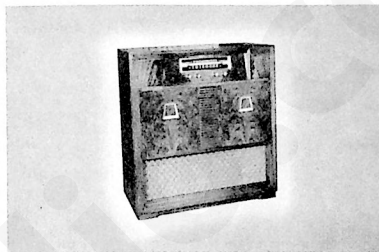
MODELS 49-1609 AND 49-1611

(Supplement to Service Manual PR-1558,
for Philco Radio-Phonograph Model 49-1606)



MODEL 49-1609

TP-6330A



MODEL 49-1611

TP-6233A

SPECIFICATIONS

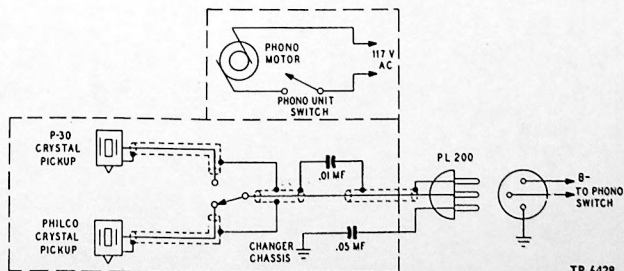
CABINET	Wood console: Model 49-1609, walnut or light finish; Model 49-1611, mahogany finish	AERIALS	Semi-high-impedance loop; line-cord FM aerial; connector for external aerial
RADIO CIRCUIT	7-tube superheterodyne (plus 2 selenium rectifiers)	INTERMEDIATE FREQUENCIES:	
FREQUENCY RANGES:		Broadcast	455 kc.
Broadcast	540 — 1620 kc.	FM	9.1 mc.
FM	88 — 108 mc.	PHILCO TUBES (7)	12AU6, 12AU7, 14F8, 6BJ6(2), 19T8, 50C6 (plus 2 selenium rectifiers)
AUDIO OUTPUT	5 watts	PHONOGRAPH	Philco Automatic Record Changer, Model M-9C (for service information, refer to Page 511)
OPERATING VOLTAGE	105 — 120 volts, 60 cycles, a.c.		
POWER CONSUMPTION:			
Radio	40 watts		
Phonograph	20 watts		

GENERAL INFORMATION

The radio chassis of these two models are electrically and mechanically identical to that of Model 49-1606. The record changer used is a Model M-9C (see diagram below); for record changer service information, refer to Page 511.

Each model is housed in a different type of cabinet. Therefore, the loop aerials are of different dimensions. (The aerial circuits are electrically the same.)

Use Service Manual PR-1558, for Model 49-1606, with this supplement.



Wiring Diagram of Model M-9C Automatic Record Changer

TP-6428

REPLACEMENT PARTS LIST

Replacement parts are the same as those in Model 49-1606, with the exception of LA400 and the MISCELLANEOUS parts listed below.

SECTION 4

Reference Symbol	Description	Service Part No.
LA400	Loop assembly:	
	Model 49-1609	76-3583-10
	Model 49-1611	76-3583-8

MISCELLANEOUS

Description	Service Part No.
Crystal pickup cartridge, P-30	35-2671-1
Needle for P-30 crystal	45-1597
Crystal pickup cartridge, Philco Special	45-1612
Needle for Philco Special crystal	45-1613

Model 49-1609

Description	Service Part No.	
	Walnut-finish cabinet	Light cabinet
Cabinet (less scale)	10705B	10705A
Baffle-and-cloth assembly	40-7598	40-7598
Bezel	56-4878	56-4878
Dial scale	54-5040	54-5040
Dome (foot, 4)	45-6190	45-6190
Doors, matched set of 2	45-6434	45-6446
Door pull (2)	56-5272	56-5272-1
Hinge, knife, with stop (1)	56-5713-8	56-5713-9
Hinge, knife (3)	56-5713-3	56-5713-7
Knob (4)	54-4486	54-4486
Speaker	36-1610-2	36-1610-2

Model 49-1611

Description	Service Part No. (Mahogany-finish cabinet)
Cabinet (less scale)	10724
Baffle-and-cloth assembly	40-7548
Bezel	56-5855
Dial scale	54-5024
Dome (foot, 4)	45-6190
Door pull (2)	56-5886
Door, record album } Door, phono } matched set	45-6466
Hinge, knife (2)	56-5522
Hinge (2)	45-6067
Instrument panel	45-6467
Knob (4)	54-4486